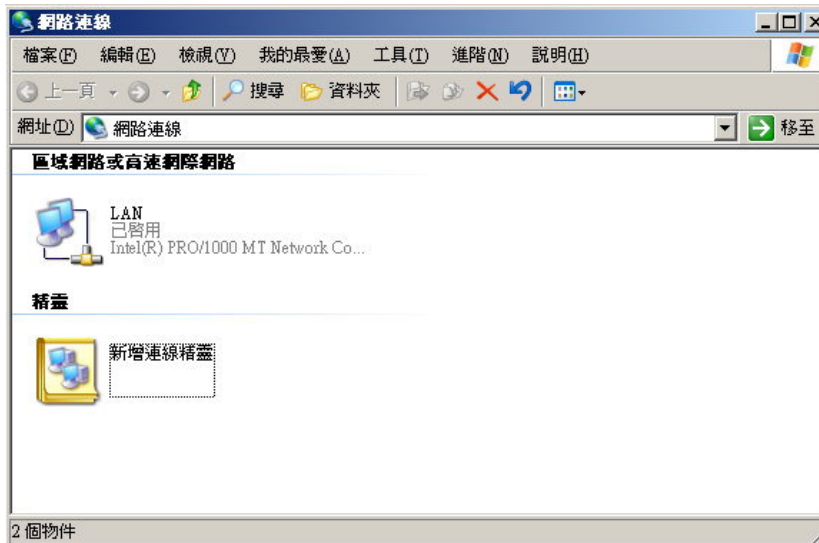


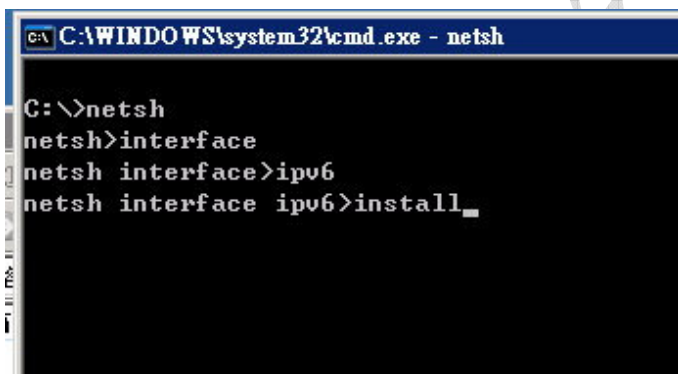
# Windows 2003 Server IPv6 設定

1. 打開「網路連線」，查看網路界面之名稱。

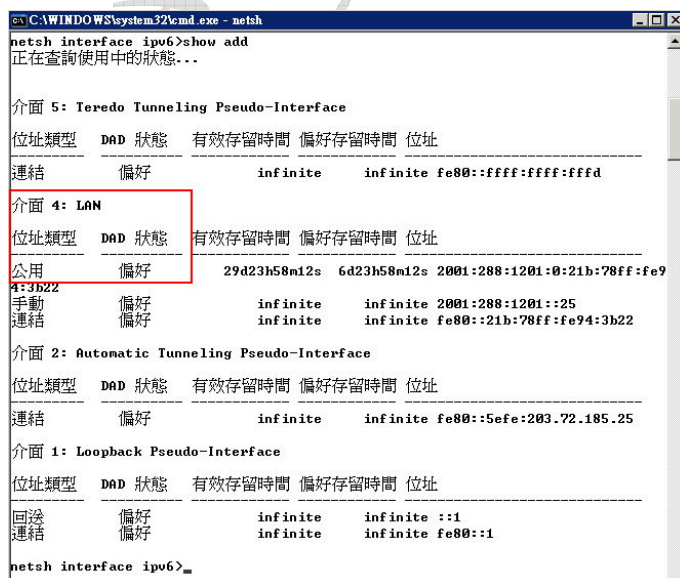


預設為「區域連線」，建議改為英文，例如 LAN，在設定時較方便。

2. 點選「開始」->「程式集」->「附屬應用程式」->「命令提示字元」
3. 打入 netsh -> interface -> ipv6 -> install



4. 打入 show add



找到步驟 1 所設定之網路界面名稱(此例為 LAN)，記下其前面的編號(此例為 4)

5. 設定固定之 IPv6 Address :

假設 IPv6 位址為 2001:288:1201::25，要設在 LAN(編號 4)上

```
add address 4 address=2001:288:1201::25 store=persistent
```

其中 store=persistent 為將此設定儲存，以免重新開機後不見

6. 設定 Default Gateway :

假設 Gateway 之 IPv6 Address 為 2001:288:1201::ffff

```
add route ::0 4 2001:288:1201::ffff store=persistent
```

7. 設定 DNS 之 IPv6 Address，如此才會透過 IPv6 封包向 DNS 查詢，否則只會透過 IPv4 封包查詢 DNS。

假設 DNS 之 IPv6 Address 為 2001:288:1201::1

```
add dns interface="LAN" address=2001:288:1201::1
```

注意，此處不可以打網路界面的編號(此例為 4)，須打界面的名稱(此例為 LAN)

8. 打入 exit 離開 netsh

9. 打入 ipconfig /all 檢查 IPv6 設定

```
Ethernet adapter LAN:

    Connection-specific DNS Suffix . . . : 
    Description . . . . . : HP NC373i Multifunction Gigabit Server Ad
apter #2
    Physical Address. . . . . : 00-1B-78-94-3B-22
    DHCP Enabled. . . . . : No
    IP Address. . . . . : 203.72.185.25
    Subnet Mask . . . . . : 255.255.255.0
    IP Address. . . . . : 2001:288:1201:0:21b:78ff:fe94:3b22
    IP Address. . . . . : 2001:288:1201::25
    IP Address. . . . . : fe80::21b:78ff:fe94:3b22x4
    Default Gateway . . . . . : 203.72.185.254
                                2001:288:1201::ffff
                                fe80::20f:8fff:fef7:3fx4
    DNS Servers . . . . . : 203.72.185.1
                                203.72.185.15
                                2001:288:1201::1
                                2001:288:1201::1
```

10. 測試 IPv6 是否可通到市網

```
ping 2001:288:1200::178
```

```
C:\>ping 2001:288:1200::178
```

```
Pinging 2001:288:1200::178 from 2001:288:1201:0:21b:78ff:fe94:3b22 with 32 bytes of data:
```

```
Reply from 2001:288:1200::178: time=3ms
Reply from 2001:288:1200::178: time=2ms
Reply from 2001:288:1200::178: time=2ms
Reply from 2001:288:1200::178: time=1ms
```

```
Ping statistics for 2001:288:1200::178:
```

```
    Packets: Sent = 4, Received = 4, Lost = 0 (0% loss),
```

```
Approximate round trip times in milli-seconds:
```

```
    Minimum = 1ms, Maximum = 3ms, Average = 2ms
```